



# **Global Earthquake Model - Opportunities for EO data?**

 Prepared for  
**1st Workshop of the Geohazards Community of Practice of GEO**

Click to edit Master subtitle style

 *Dr. Beverley Adams, Managing Director*

1/19/10

# who we are.....

ImageCat is an international risk management innovation company, highly regarded for its R&D, consultancy services, and bespoke business solutions.



eCityRisk  
is a trusted  
global provider  
of Visual Business

1/19/10

*Inventors of Risk Management Technologies  
Take a View with*

Intelligence for the 



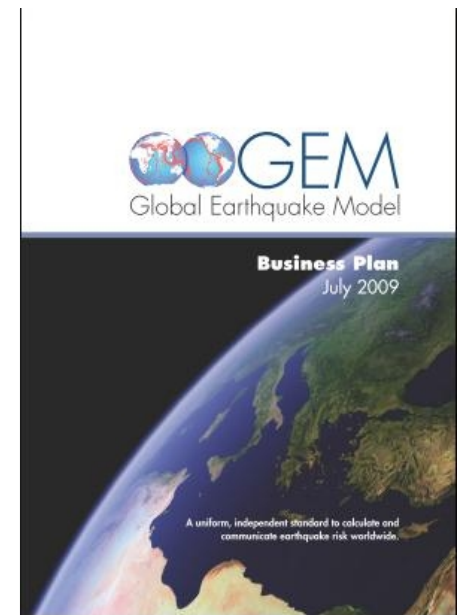
# GEM is.....

[www.globalquakemodel.org](http://www.globalquakemodel.org)

- **PPP** – a public-private cooperation, involving companies, countries, institutions and organizations
- **Risk model** - the first global, open source model for seismic risk assessment at a national and regional scale
- **Scientific** – aiming to achieve broad scientific participation and serve as an independent standard for calculating and communicating earthquake risk worldwide
- **Multi-faceted** – being conducted in three integrated modules: Hazard, Risk, and Socio-Economic Impact.

● **Broad beneficiaries** – non/

*Inventors of Risk Management Technologies  
Take a View with*

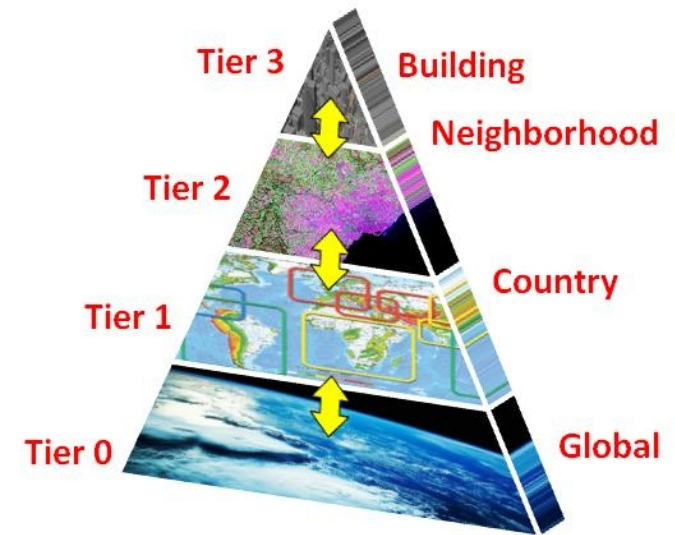


1/19/10

# opportunities for EO data....

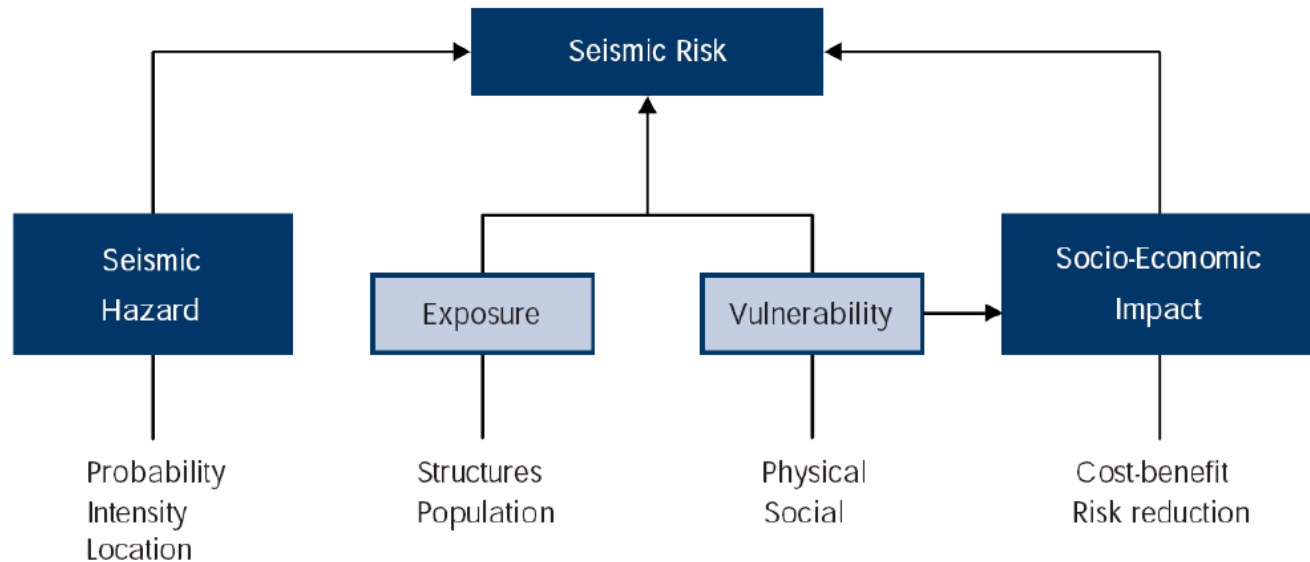
*GEM will aim to establish new global standards, while adapting to regional differences in modelling practise and the availability and quality of knowledge and data.....*

**GEM Business Plan  
July 2009**



1/19/10

# GEM scientific framework



1/19/10

# potential opportunities for EO

## Exposure

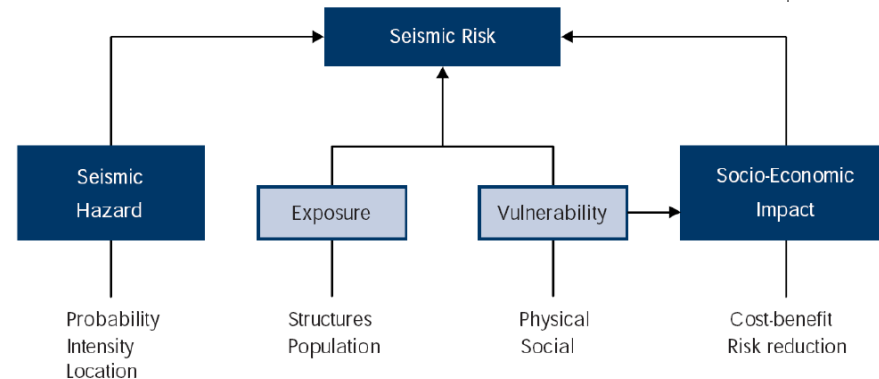
- » Building inventory development
- » Global Exposure database

## Vulnerability

- » Post-event damage information
- » Historic archive

## Socio-economic

- » Population estimation
- » Casualty estimation

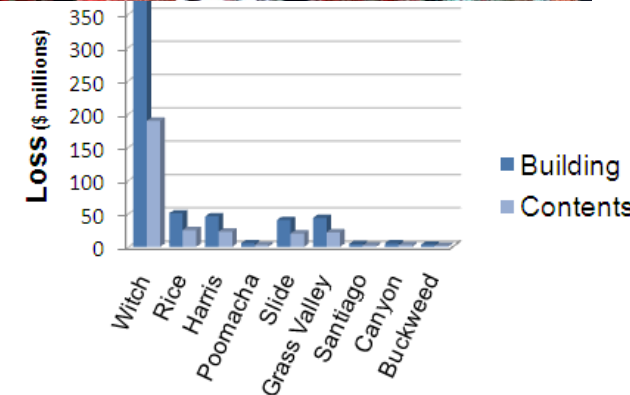
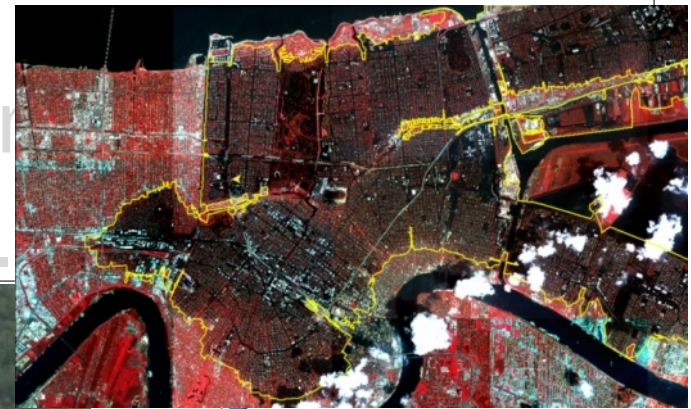


1/19/10



# Questions?

[www.globalquaker.com](http://www.globalquaker.com)  
[www.imagecatinc.com](http://www.imagecatinc.com)



1/19/10